



ELEVATION C

3/3/2021

infinitybuilthomes.com



NOTES :

---

---

---

---

---

---

---

---

---

---

---

---

---

---

---

---

---

---

---

---

---

---

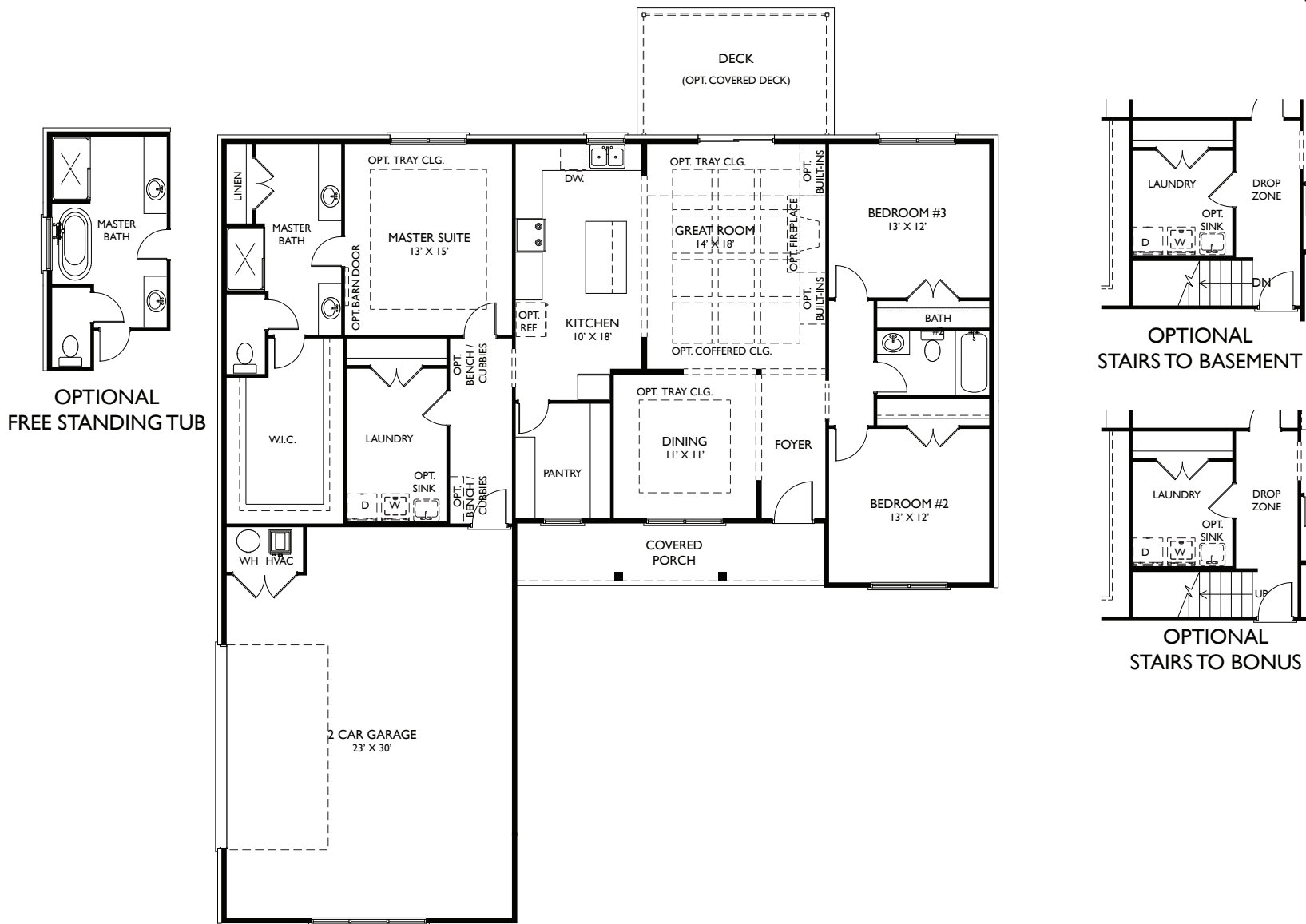
---

---

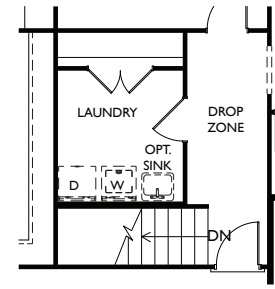
The Belmont offers the desirable modern farmhouse charm starting with the lovely front porch. Upon opening the front door, you are drawn to the open great room, gourmet kitchen with oversized island and dining area that opens to a rear patio. The master suite is large with attached bath and oversized closet. In addition to two more bedrooms, hall bath, laundry room, and two-car garage an optional basement or bonus room can be added.

# The Belmont

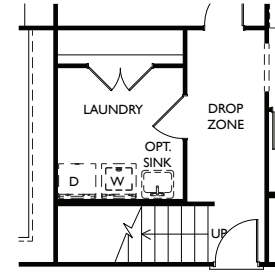
Approximate Sq.Ft. 2,001, 3-4 Bedrooms, 2-3 Baths,  
2 Car Garage, Optional finished/un-finished basement  
OR Optional bonus room



**MAIN LEVEL**  
2,001 SQ.FT.



**OPTIONAL STAIRS TO BASEMENT**



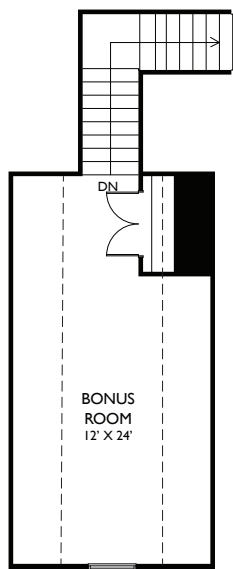
**OPTIONAL STAIRS TO BONUS**



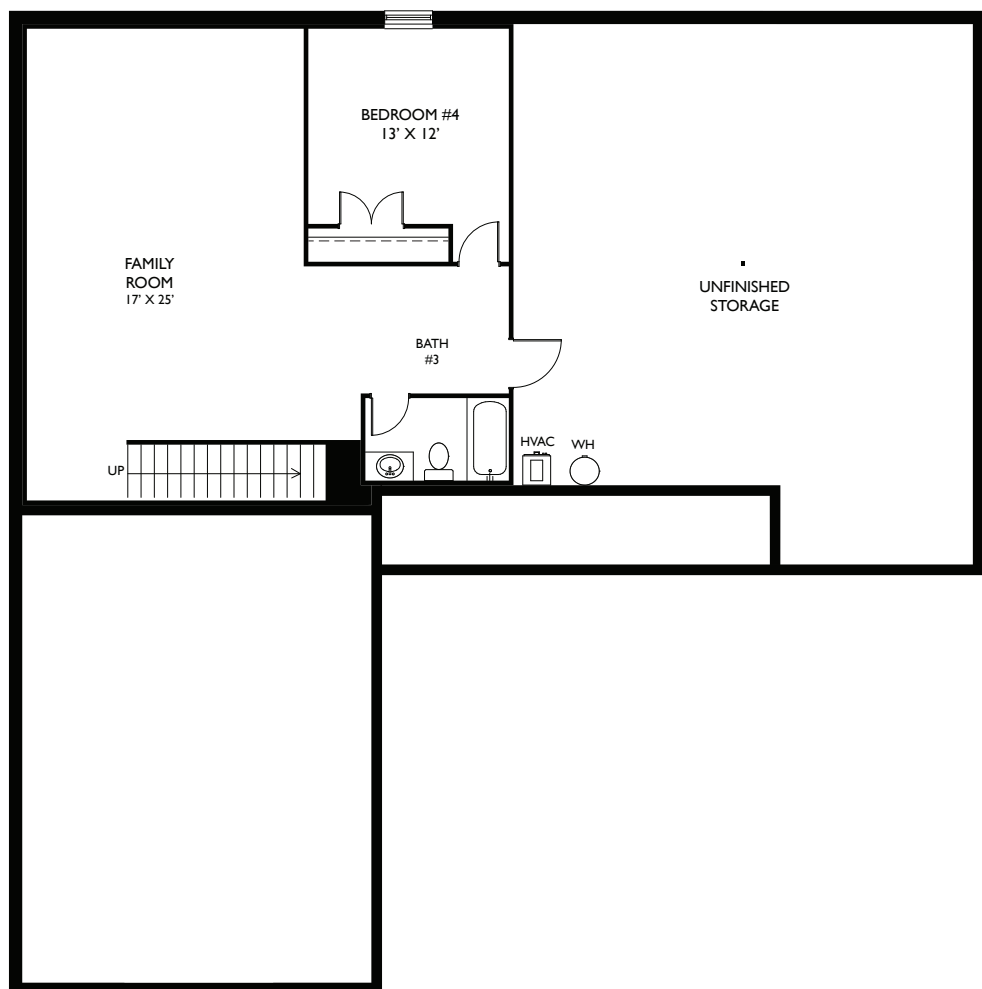
**OPTIONAL DAYLIGHT**



**OPTIONAL WALKOUT**



**OPTIONAL BONUS ROOM**  
327 SQ.FT.



**BASEMENT LEVEL**  
829 SQ.FT.